



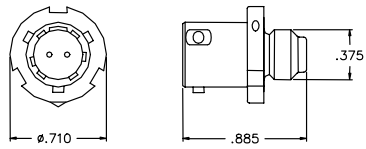
24225 GARNIER STREET • TORRANCE • CALIFORNIA 90505-5355 • U.S.A.  
TELEPHONES: (310) 784-2100 • (800) 733-0321 • FAX: (310) 326-0797  
E-mail: marketing@hstc.com

Issue Date: 1-3-01  
Revision: A 02MAY06  
Page 1 of 8

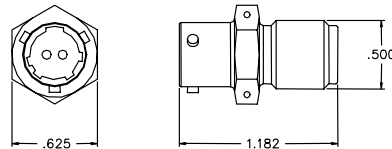
### HI-SHEAR POWER CARTRIDGES



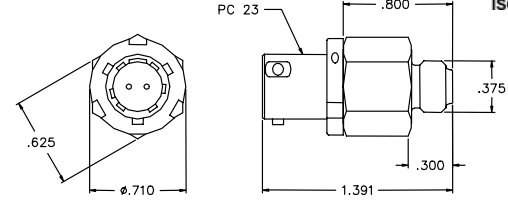
PC23



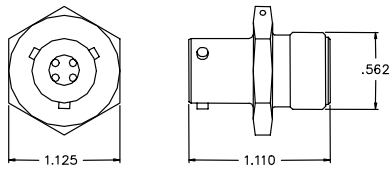
PC72



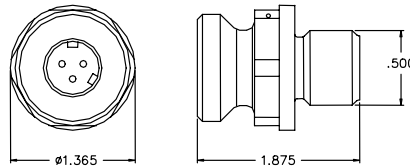
PC154



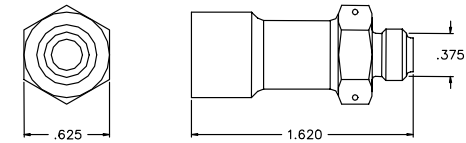
PC28



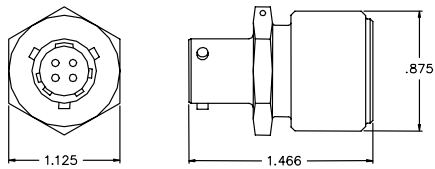
PC75



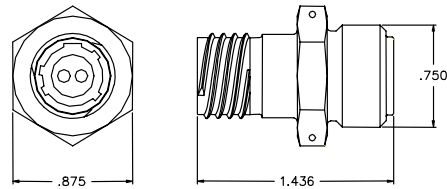
PC182



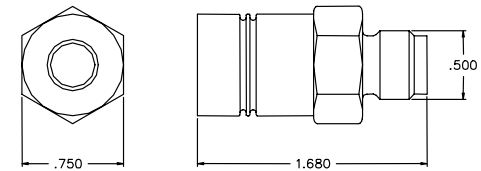
PC35



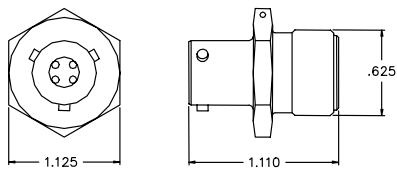
PC94-TRI START



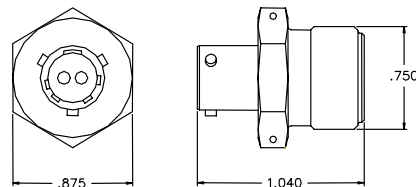
PC182



PC46



PC94





24225 GARNIER STREET • TORRANCE • CALIFORNIA 90505-5355 • U.S.A.  
 TELEPHONES: (310) 784-2100 • (800) 733-0321 • FAX: (310) 326-0797  
 E-mail: marketing@hstc.com

Issue Date: 1-3-01  
 Revision: A 02MAY06  
 Page 2 of 8



## HI-SHEAR POWER CARTRIDGES BY THREAD SIZE

# 3/8-24UNF-3A

Data contained herein is the result of tests performed, and is submitted as information only. Before finalizing specifications for your application on items listed, it is recommended you consult Hi-Shear Technology Corporation Engineering.

Unless otherwise indicated, the data list is for local ambient conditions and the application of the recommended firing current.

PART NUMBER	OUTPUT END	MATING CONNECTOR	BRIDGEWIRE S & RESISTANCE	MAXIMUM NO-FIRE	MINIMUM ALL-FIRE	RECOMMENDED FIRING CURRENT	FUNCTION TIME	PRESSURE VS TIME	TEST CHAMBER SIZE
PC14	.440 ± .015	MS3116-8-4S	2 - 1.1 ±0.1Ω	1W/1A	3.5A	5.0A	1.2 Msec	2170 psi/1.8 Msec	10.0 cc
PC15	.440 ± .015	MS3116-8-4S	2 - 1.1 ±0.1Ω	1W/1A	3.5A	5.0A	1.2 Msec	1150 psi/1.8 Msec	10.0 cc
PC16-003	.440 ± .015	MS3116-8-4S	2 - 1.1 ±0.1Ω	1W/1A	3.5A	5.0A	1.2 Msec	2600 psi/3.5 Msec	10.0 cc
PC16-005	.440 ± .015	MS3116-8-4S	2 - 1.1 ±0.1Ω	1W/1A	3.5A	5.0A	1.2 Msec	1200 psi/3.5 Msec	10.0 cc
PC16-007	.440 ± .015	MS3116-8-4S	2 - 1.1 ±0.1Ω	1W/1A	3.5A	5.0A	1.2 Msec	3100 psi/3.5 Msec	10.0 cc
PC16-009				S I M U L A T O R					
PC17-003	.440 ± .015	MS3116-8-4S	2 - 2.7 ±0.6Ω	0.2A	1.5A	2.0A	1.2 Msec	2600 psi/3.5 Msec	10.0 cc
PC17-005	.440 ± .015	MS3116-8-4S	2 - 2.7 ±0.6Ω	0.2A	1.5A	2.0A	1.2 Msec	1200 psi/3.5 Msec	10.0 cc
PC18	.440 ± .015	H/S SNC1001	2 - 1.0 ±0.1Ω	1W/1A	3.5A	5.0A	1.2 Msec	500 psi/1.8 Msec	10.0 cc
PC19-003	.394± .005	MS3116-8-4S	2 - 1.1 ±0.1Ω	1W/1A	3.5A	5.0A	1.2 Msec	350 psi/< 2 Msec	1.0 in <sup>3</sup>
PC19-005	.394 ± .005	MS3116-8-4S	2 - 1.1 ±0.1Ω	1W/1A	3.5A	5.0A	1.2 Msec	525 psi/< 2 Msec	1.0 in <sup>3</sup>
PC21-003	.430 ± .015	MS3116-8-4S	2 - 2.7 ±0.6Ω	0.1A	0.7a	1.0A	1.2 Msec	660 psi/1.5 Msec	10.0 cc
PC22-003	.480 ± .015	PT06-8-2S	1 - 1.1 ±0.1Ω	1W/1A	3.5A	4.5A	2.2 Msec	1500 psi/2.5 Msec	3.0 cc
PC23*	.360 ± .300	MS3116-8-2S	1 - 0.95-1.15Ω	1W/1A	3.5A	5.0A	2.9 Msec	657 psi/< 4 Msec	10.0 cc
PC39-003	.292 ± .015	MS3116-8-4S	2 - 1.1 ±0.1Ω	1W/1A	3.5A	5.0A	1.2 Msec	650 psi/1.8 Msec	10.0 cc

\*\*Equivalent\* to NASA Standard Initiator (NSI) - Single Bridgewire Standard Initiator



24225 GARNIER STREET • TORRANCE • CALIFORNIA 90505-5355 • U.S.A.  
 TELEPHONES: (310) 784-2100 • (800) 733-0321 • FAX: (310) 326-0797  
 E-mail: marketing@hstc.com

Issue Date: 1-3-01  
 Revision: A 02MAY06  
 Page 3 of 8

## HI-SHEAR POWER CARTRIDGES BY THREAD SIZE

### 1/2-20UNF-3A

Data contained herein is the result of tests performed, and is submitted as information only. Before finalizing specifications for your application on items listed, it is recommended you consult Hi-Shear Technology Corporation Engineering.



Unless otherwise indicated, the data list is for local ambient conditions and the application of the recommended firing current.

PART NUMBER	OUTPUT END	MATING CONNECTOR	BRIDGEWIRES & RESISTANCE	MAXIMUM NO-FIRE	MINIMUM ALL-FIRE	RECOMMENDED FIRING CURRENT	FUNCTION TIME	PRESSURE VS TIME	TEST CHAMBER SIZE
PC10	.610 ± .015	MS3116-8-4S	2 - 1.1 ±0.1Ω	1W/1A	3.5A	5.0A	1.3 Msec	4150 psi/<2 Msec	10.0 cc
PC10-003	.610 ± .015	MS3116-8-4S	2 - 1.1 ±0.1Ω	1W/1A	3.5A	5.0A	1.5 Msec	4800 psi/<2 Msec	10.0 cc
PC10M	.610 ± .015	51 Series Watermate	2 - 1.1 ±0.1Ω	1W/1A	3.5A	5.0A	1.3 Msec	4150 psi/<2 Msec	10.0 cc
PC11-003	.610 ± .015	MS3116-8-4S	2 - 1.1 ±0.1Ω	1W/1A	3.5A	5.0A	1.2 Msec	4150 psi/<2 Msec	10.0 cc
PC11-005	.610 ± .015	MS3116-8-4S	2 - 1.1 ±0.1Ω	1W/1A	3.5A	5.0A	1.2 Msec	4150 psi/<2 Msec	10.0 cc
PC12	.610 ± .015	MS3116-8-4S	2 - 1.1 ±0.1Ω	1W/1A	3.5A	5.0A	1.3 Msec	2370 psi/1.5 Msec	10.0 cc
PC13	.610 ± .015	MS3116-8-4S	1 + C. Loop 1.1 ±0.1Ω	1W/1A	3.5A	5.0A	1.3 Msec	4150 psi/1.8 Msec	10.0 cc
PC24	.610 ± .015	MS3116-8-4S	2 - 1.1 ±0.1Ω	1W/1A	3.5A	5.0A	1.2 Msec	1975 psi/1.7 Msec	10.0 cc
PC29	.610 ± .015	MS3116-8-4S	2 - 1.1 ±0.1Ω	1W/1A	3.5A	5.0A	1.2 Msec	3500 psi/1.6 Msec	10.0 cc
PC30	.610 ± .015	MS3116-8-4S	2 - 1.1 ±0.1Ω	1W/1A	3.5A	5.0A	1.2 Msec	570 psi/1.5 Msec	10.0 cc
PC31-003	.610 ± .015	MS3116-8-4S	2 - 1.1 ±0.1Ω	1W/1A	3.5A	5.0A	1.2 Msec	250 psi/1.5 Msec	10.0 cc
PC32-003	.610 ± .015	MS3116-8-4S	2 - 1.1 ±0.1Ω	1W/1A	3.5A	5.0A	1.2 Msec	1640 psi/1.6 Msec	10.0 cc
PC32-005	.610 ± .015	MS3116-8-4S	2 - 1.1 ±0.1Ω	1W/1A	3.5A	5.0A	1.2 Msec	1640 psi/1.6 Msec	10.0 cc
PC33	.610 ± .015	MS3116-8-4S	2 - 1.1 ±0.1Ω	1W/1A	3.5A	5.0A	1.2 Msec	1050 psi/1.7 Msec	10.0 cc
PC34	.415 ± .015	MS3116-8-4SW	2 - 1.1 ±0.1Ω	1W/1A	3.5A	5.0A	1.2 Msec	1640 psi/1.8 Msec	10.0 cc
PC36-003	.310 ± .015	MS3116-8-4S	2 - 1.1 ±0.1Ω	1W/1A	3.5A	5.0A	1.2 Msec	940 psi/1.4 Msec	10.0 cc
PC37	.415 ± .015	PT06-8-2S	1 - 1.1 ±0.1Ω	1W/1A	3.5A	5.0A	1.2 Msec	1325 psi/1.8 Msec	10.0 cc
PC38	.610 ± .015	H/S SNC1001	2 - 1.1 ±0.1Ω	1W/1A	3.5A	5.0A	1.2 Msec	4150 psi/1.9 Msec	10.0 cc
PC40-003	.610 ± .015	PT06-8-2S	1 - 1.1 ±0.1Ω	1W/1A	3.5A	5.0A	1.2 Msec	1640 psi/1.8 Msec	10.0 cc



24225 GARNIER STREET • TORRANCE • CALIFORNIA 90505-5355 • U.S.A.  
 TELEPHONES: (310) 784-2100 • (800) 733-0321 • FAX: (310) 326-0797  
 E-mail: marketing@hstc.com

Issue Date: 1-3-01  
 Revision: A 02MAY06  
 Page 4 of 8

## HI-SHEAR POWER CARTRIDGES BY THREAD SIZE

# 1/2-20UNF-3A

Data contained herein is the result of tests performed, and is submitted as information only. Before finalizing specifications for your application on items listed, it is recommended you consult Hi-Shear Technology Corporation Engineering.



Unless otherwise indicated, the data list is for local ambient conditions and the application of the recommended firing current.

PART NUMBER	OUTPUT END	MATING CONNECTOR	BRIDGEWIRES & RESISTANCE	MAXIMUM NO-FIRE	MINIMUM ALL-FIRE	RECOMMENDED FIRING CURRENT	FUNCTION TIME	PRESSURE VS TIME	TEST CHAMBER SIZE
PC40-005	.610 ± .015	PT06-8-2S	1 - 1.1 ±0.1Ω	1W/1A	3.5A	5.0A	1.2 Msec	1400 psi/1.8 Msec	10.0 cc
PC40-007	.610 ± .015	PT06-8-2S	1 - 1.1 ±0.1Ω	1W/1A	3.5A	5.0A	1.2 Msec	1400 psi/1.8 Msec	10.0 cc
PC42*	.518 ± .015	MS3116-8-4S	2 - 1.1 ±0.1Ω	1W/1A	3.5A	5.0A	1.2 Msec	1400 psi/1.8 Msec	10.0 cc
PC42-003	.518 ± .015	MS3116-8-4S	2 - 1.1 ±0.1Ω	1W/1A	3.5A	5.0A	1.2 Msec	3100 psi/1.8 Msec	10.0 cc
PC42-005**	.518 ± .015	MS3116-8-4S	2 - 1.1 ±0.1Ω	1W/1A	3.5A	5.0A	1.2 Msec	1400 psi/1.8 Msec	10.0 cc
PC42-007	.518 ± .015	MS3116-8-4S	2 - 1.1 ±0.1Ω	1W/1A	3.5A	5.0A	1.2 Msec	1400 psi/1.8 Msec	10.0 cc
PC43	.415 ± .015	PT06-8-3S	1 - 1.1 ±0.1Ω	1W/1A	3.5A	5.0A	1.2 Msec	600 psi/1.7 Msec	10.0 cc
PC48	.610 ± .015	MS3116-8-4S	1 + C. Loop 1.1 ±0.1Ω	1W/1A	3.5A	5.0A	1.2 Msec	2730 psi/1.5 Msec	10.0 cc
PC52	.375 ± .015	JT06P-10-5S	1 + C. Loop & Gr. Wire 0.9 ±0.1Ω	1W/1A	3.5A	5.0A	1.2 Msec	As Required	
PC56-001	.625 ± .015	Wire Leads	2 - 1.1 ±0.1Ω	1W/1A	3.5A	5.0A	1.2 Msec	700 psi/1.5 Msec	10.0 cc
PC56-002	.625 ± .015	Wire Leads	2 - 1.1 ±0.1Ω	1W/1A	3.5A	5.0A	1.2 Msec	1180 psi/1.5 Msec	10.0 cc
PC56-003	.625 ± .015	Wire Leads	2 - 1.1 ±0.1Ω	1W/1A	3.5A	5.0A	1.2 Msec	2500 psi/1.5 Msec	10.0 cc
PC56-004	.625 ± .015	Wire Leads	2 - 1.1 ±0.1Ω	1W/1A	3.5A	5.0A	1.2 Msec	3200 psi/1.5 Msec	10.0 cc
PC56-011	.625 ± .015	Wire Leads	2 - 1.1 ±0.1Ω	1W/1A	3.5A	5.0A	1.2 Msec	1640 psi/1.5 Msec	10.0 cc
PC57-003	.610 ± .015	MS3116-8-4S	Loop 0.1Ω Max.	1W/1A	3.5A	5.0A	1.2 Msec	4000 psi/3.0 sec	10.0 cc
PC57-005	.610 ± .015	MS3116-8-4S	Loop	1W/1A	3.5A	5.0A	1.2 Msec	1200 psi/2.2 sec	10.0 cc

\* PC42 - Stainless steel body, gold plated.

\*\* PC42-005 - Left hand threads.



24225 GARNIER STREET • TORRANCE • CALIFORNIA 90505-5355 • U.S.A.  
TELEPHONES: (310) 784-2100 • (800) 733-0321 • FAX: (310) 326-0797  
E-mail: marketing@hstc.com

Issue Date: 1-3-01  
Revision: A 02MAY06  
Page 5 of 8

## HI-SHEAR POWER CARTRIDGES BY THREAD SIZE 9/16-18UNF-3A

Data contained herein is the result of tests performed, and is submitted as information only. Before finalizing specifications for your application on items listed, it is recommended you consult Hi-Shear Technology Corporation Engineering.

Unless otherwise indicated, the data list is for local ambient conditions and the application of the recommended firing current.



PART NUMBER	OUTPUT END	MATING CONNECTOR	BRIDGEWIRES & RESISTANCE	MAXIMUM NO-FIRE	MINIMUM ALL-FIRE	RECOMMENDED FIRING CURRENT	FUNCTION TIME	PRESSURE VS TIME	TEST CHAMBER SIZE
PC28	.610 ± .015	MS3116-8-4S	2 - 1.1 ±0.1Ω	1W/1A	3.5A	5.0A	1.2 Msec	4150 psi/1.8 Msec	10.0 cc
PC54	.518 ± .015	MS3116-8-4S	2 - 1.1 ±0.1Ω	1W/1A	3.5A	5.0A	1.2 Msec	3500 psi/1.8 Msec	10.0 cc



24225 GARNIER STREET • TORRANCE • CALIFORNIA 90505-5355 • U.S.A.  
 TELEPHONES: (310) 784-2100 • (800) 733-0321 • FAX: (310) 326-0797  
 E-mail: marketing@hstc.com

Issue Date: 1-3-01  
 Revision: A 02MAY06  
 Page 6 of 8

## HI-SHEAR POWER CARTRIDGES BY THREAD SIZE

# 5/8-18UNF-3A

Data contained herein is the result of tests performed, and is submitted as information only. Before finalizing specifications for your application on items listed, it is recommended you consult Hi-Shear Technology Corporation Engineering.

Unless otherwise indicated, the data list is for local ambient conditions and the application of the recommended firing current.



PART NUMBER	OUTPUT END	MATING CONNECTOR	BRIDGEWIRES & RESISTANCE	MAXIMUM NO-FIRE	MINIMUM ALL-FIRE	RECOMMENDED FIRING CURRENT	FUNCTION TIME	PRESSURE VS TIME	TEST CHAMBER SIZE
PC27-003	.610 Max	MS3116-8-4S	2 - 1.1 $\pm$ 0.1 $\Omega$	1W/1A	3.5A	5.0A	1.2 Msec	4150 psi/1.8 Msec	10.0 cc
PC27-005	.610 Max	MS3116-8-4S	2 - 1.1 $\pm$ 0.1 $\Omega$	1W/1A	3.5A	5.0A	1.2 Msec	2750 psi/1.8 Msec	10.0 cc
PC27-007	.770 Max	MS3116-8-4S	2 - 1.1 $\pm$ 0.1 $\Omega$	1W/1A	3.5A	5.0A	1.2 Msec	6500 psi/1.8 Msec	10.0 cc
PC41	.865 $\pm$ .015	MS3116-8-4S	2 - 1.1 $\pm$ 0.1 $\Omega$	1W/1A	3.5A	5.0A	1.2 Msec	11,000 psi/55 Msec	20.0 cc
PC44	.865 $\pm$ .015	MS3116-8-4S	2 - 1.1 $\pm$ 0.1 $\Omega$	1W/1A	3.5A	5.0A	1.2 Msec	7000 psi/1.8 Msec	20.0 cc
PC46	.610 Max	MS3116-8-4S	2 - 1.1 $\pm$ 0.1 $\Omega$	1W/1A	3.5A	5.0A	1.2 Msec	4150 psi/1.8 Msec	10.0 cc



24225 GARNIER STREET • TORRANCE • CALIFORNIA 90505-5355 • U.S.A.  
TELEPHONES: (310) 784-2100 • (800) 733-0321 • FAX: (310) 326-0797  
E-mail: marketing@hstc.com

Issue Date: 1-3-01  
Revision: A 02MAY06  
Page 7 of 8

## HI-SHEAR POWER CARTRIDGES BY THREAD SIZE 3/4-16UNF-3A

Data contained herein is the result of tests performed, and is submitted as information only. Before finalizing specifications for your application on items listed, it is recommended you consult Hi-Shear Technology Corporation Engineering.

Unless otherwise indicated, the data list is for local ambient conditions and the application of the recommended firing current.



PART NUMBER	OUTPUT END	MATING CONNECTOR	BRIDGEWIRES & RESISTANCE	MAXIMUM NO-FIRE	MINIMUM ALL-FIRE	RECOMMENDED FIRING CURRENT	FUNCTION TIME	PRESSURE VS TIME	TEST CHAMBER SIZE
PC69-003	.485 ± .015	MS3116ES-4S	1 - 1.1 ±0.1Ω	1W/1A	3.5A	5.0A	1.2 Msec	7000 psi/3.2 Msec	10.0 cc
PC69-005	.485 ± .015	MS3116ES-4S	1 - 1.1 ±0.1Ω	1W/1A	3.5A	5.0A	1.2 Msec	6600 psi/3.2 Msec	10.0 cc



24225 GARNIER STREET • TORRANCE • CALIFORNIA 90505-5355 • U.S.A.  
 TELEPHONES: (310) 784-2100 • (800) 733-0321 • FAX: (310) 326-0797  
 E-mail: marketing@hstc.com

Issue Date: 1-3-01  
 Revision: A 02MAY06  
 Page 8 of 8

## HI-SHEAR POWER CARTRIDGES BY THREAD SIZE

# 7/8-14UNF-3A

Data contained herein is the result of tests performed, and is submitted as information only. Before finalizing specifications for your application on items listed, it is recommended you consult Hi-Shear Technology Corporation Engineering.

Unless otherwise indicated, the data list is for local ambient conditions and the application of the recommended firing current.



PART NUMBER	OUTPUT END	MATING CONNECTOR	BRIDGEWIRES & RESISTANCE	MAXIMUM NO-FIRE	MINIMUM ALL-FIRE	RECOMMENDED FIRING CURRENT	FUNCTION TIME	PRESSURE VS TIME	TEST CHAMBER SIZE
PC25	.632 ± .015	MS3116-8-4S	2 - 1.0 ±.05Ω	1W/1A	3.5A	5.0A	1.5 Msec	11,000 psi/1.6 Msec	0.2 cu. in.
PC35-003	.860 ± .020	MS3116-8-4S	2 - 1.1 ±0.1Ω	1W/1A	3.5A	5.0A	1.2 Msec	3750 psi/1.5 Msec	2 cu. in.
PC35-005	.860 ± .020	MS3116-8-4S	S I M U L A T O R						
PC45	.860 ± .020	MS3116-10-6S	2 +C. Loop 1.1 ±0.1Ω	1W/1A	3.5A	5.0A	1.2 Msec	3750 psi/1.5 Msec	2 cu. in.
PC75-003	.740	See Note	1 + Gr 1.00 ±.20Ω	1W/1A	3.5A	5.0A	4.0 Msec	5500 psi/5.5 Msec	20.0 cc

Note: The PC75 series cartridges were designed for the U.S. Navy DRSV.  
 The connector is D. G. O'Brien 107-16-3S, BuShips 1197348-1240.1.