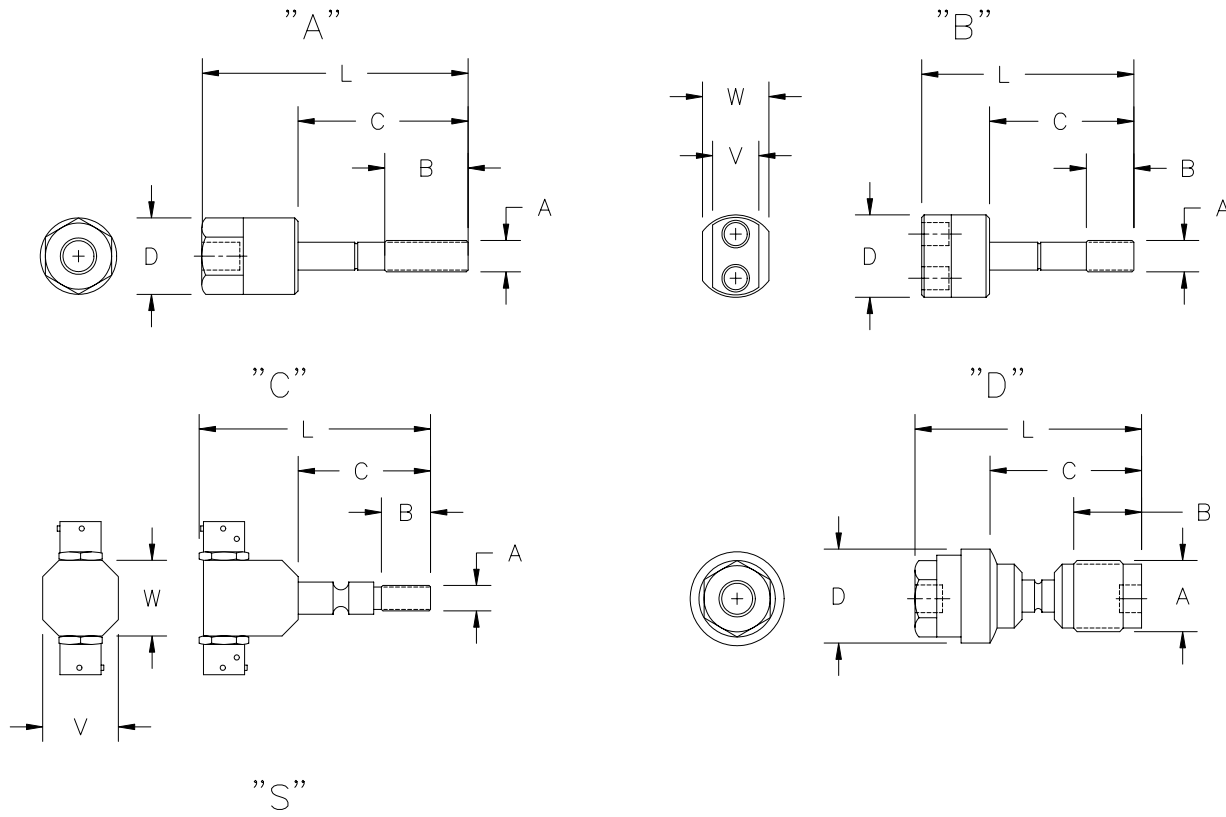




24225 GARNIER STREET • TORRANCE • CALIFORNIA 90505-5355 • U.S.A.
TELEPHONES: (310) 784-2100 • (800) 733-0321 • FAX: (310) 326-0797
E-mail: info@hstc.com

Issue Date: 1-3-01
Revision: A (2-13-04)
Page 1 of 3

PRODUCT LINE SUMMARY SEPARATION BOLTS (SB SERIES)



(SPECIAL— SEE ASSEMBLY DRAWING)

SEE TABULATION TABLES



ISO 9001 A9813



24225 GARNIER STREET • TORRANCE • CALIFORNIA 90505-5355 • U.S.A.
 TELEPHONES: (310) 784-2100 • (800) 733-0321 • FAX: (310) 326-0797
 E-mail: info@hstc.com

Issue Date: 1-3-01
 Revision: A (2-13-04)
 Page 2 of 3

PRODUCT LINE SUMMARY SEPARATION BOLTS (SB SERIES)

SB MODEL NO.	PART NO.	CONFIG TYPE	LIMIT LOAD LBS.	ULT. TENSILE STRENG. LBS (x 1000)	BASIC DIMENSIONS							SEPARATION SYS		CARTRIDGE		MATERIAL COMPOSITION		
					A BOLT SIZE	B	C	D	L	V	M	SIMPLE	COM	NO	PORT SIZE	HOUSING	PISTON	STUD
1003-4	9361652	A	4.0	6.0	1/4	.75	1.50	.72	2.63	-	-	X		1	1/2-20	17-4PH	440 S.S.	17-4PH
1003-6	9361649	A	5.7	8.5	3/8	1.13	2.00	.88	3.25	-	-	X			1/2-20	17-4PH	M.S. 18-300	17-4PH
1007-6 A,B	9362224	A	10	15.0	3/8	.98	2.20	1.10	4.05	-	-	X		1	9/16-18	17-4PH	M.S. 18-300	17-4PH
1007-6C	9363074	SAME	AS	9362224-3	3/8	LESS	BASE	COA	TING									
1004-6	9361334	A			3/8	.75	1.36	1.00	2.61	-	-	X		1	3/4-20	17-4PH	17-4PH	17-4PH
4000*	9362062	A MODIF			1/2	1.00	3.00	1.13 HEX	3.50	-	-			EXPLODING POWER CHARGE		C1215	-	-
4001-3*	9362321	A MODIF			1/2	1.00	1.50	.75	2.00	-	-			EXPLODING POWER CHARGE		PH13-8 MO	-	-
4002-1*	9362632	A MODIF			1/2	1.00	1.50	.75	3.18	-	-			EXPLODING POWER CHARGE			-	-
4200-4	9362106	A MODIF			1/2	2.10	2.50	.75	3.46					EXPLODING POWER CHARGE		PH13-8 MO		
1003P-8- 26	9361434	B	7.3	11.0	1/2	.75	1.69	1.50	3.00	.75	1.03	X		2	1/2-20	17-4PH	17-4PH	17-4PH
1005-3	9362073	C	5.2	7.8	1/2	1.25	2.50	-	4.76	1.50	1.40	X		2	9/16-18	17-4PH	M.S. 18-300	17-4PH
2007-8*	9361227	S	5.5	8.3	1/2	.54	.60	1.25	1.91	-	-	X		1	1/2-20	17-4PH	17-4PH	17-4PH
1003P-10	9361472	B	14.3	21.5	5/8	1.00	2.75	1.50	4.18	.75	-	X		2	1/2-20	17-4PH	M.S. 18-300	17-4PH
1005-12	9361616	A	30.6	46.0	3/4	1.25	2.79	1.49	4.40	-	-		X	1	1-3/ 16-28	AISI 4340	H.S. 18-300	AISI 4340
1005-12A	9361766	A	30.6	46.0	3/4	.99	1.86	1.49	3.47	-	-		X	1	1-3/ 18-28	AISI 4340	M.S. 18-300	AISI 4340

- NOTES:
- 1) All dimensions given in inches
 - 2) Model no.'s asterisked include pressure cartridge or power charge as part of assembly
 - 3) Asterisked outline under configuration types indicates cartridge location





24225 GARNIER STREET • TORRANCE • CALIFORNIA 90505-5355 • U.S.A.
 TELEPHONES: (310) 784-2100 • (800) 733-0321 • FAX: (310) 326-0797
 E-mail: info@hstc.com

Issue Date: 1-3-01
 Revision: A (2-13-04)
 Page 3 of 3

PRODUCT LINE SUMMARY SEPARATION BOLTS (SB SERIES)

SB MODEL NO.	PART NO.	CONFIG TYPE	LIMIT LOAD LBS.	ULT. TENSILE STRENG. LBS (x 1000)	BASIC DIMENSIONS							SEPARATION SYS.		CARTRIDGE		MATERIAL COMPOSITION		
					A BOLT SIZE	B	C	D	L	V	M	SIMPLE	COM	NO	PORT SIZE	HOUSING	PISTON	STUD
1010-1	9363114	A			3/4	.50	.90	1.88 HEX	2.10	-	-	X		1	1-12	7075-T7	7075-T7	7075-T7
4300-6	9362105	A MODIF	12.0	18.0	3/4	1.01	1.55	1.00	2.45	-	-		EXPLODING POWER CHARGE		PH 13-8 MO	-	-	
4300-6a	9362105	A MODIF	12.0	18.0	3/4	1.01	1.51	1.00	2.29	-	-		EXPLODING POWER CHARGE		PH13-8 MO	-	-	
1005-16	9361965	A	58.0	87.0	1	1.42	3.38	2.25	6.88	-	-	X	1	1.75-12	AISI 4340	M.S. 18-300	AISI 4340	
4100-3	9362086 *	A MODIF			1-3/8	.95	2.34	1.88	2.90	-	-		EXPLODING POWER CHARGE		PH13-8 MO	-	-	
1006-3 -5,-7	9361904	D	26.7	40.0	1-1/2	1.46	3.32	1.86	4.70	-	-	X	2	3/4-16	AISI 4340	M.S. 18-300	-	
1008-3, -5	9362793	D	202	282	3.45	4.24	21.79	5.00	25.38	-	-	X	2	1-7/8-12	AISI 4340	M.S. 18-300	-	
1009-3, -5	9362801	D	393	550	4.75	5.75	8.09	5.75	11.75	-	-	X	2	1-78-12	AISI 4340	AISI 4340, M.S. 18-300	-	
20015-4*	936418	S	1.7	2.5		-	-	.88	5.83	.75	2.25	X	1	1/2-20	17-4PH	17-4PH	-	
4002-2*	9362918	S	5.2	7.8		-	-	.97	3.50	-	-		EXPLODING POWER CHARGE		PH13-8 MO	-	-	

- NOTES:
- 1) All dimensions given in inches
 - 2) Model no.'s asterisked include pressure cartridge or power charge as part of assembly
 - 3) Asterisked outline under configuration types indicates cartridge location

