

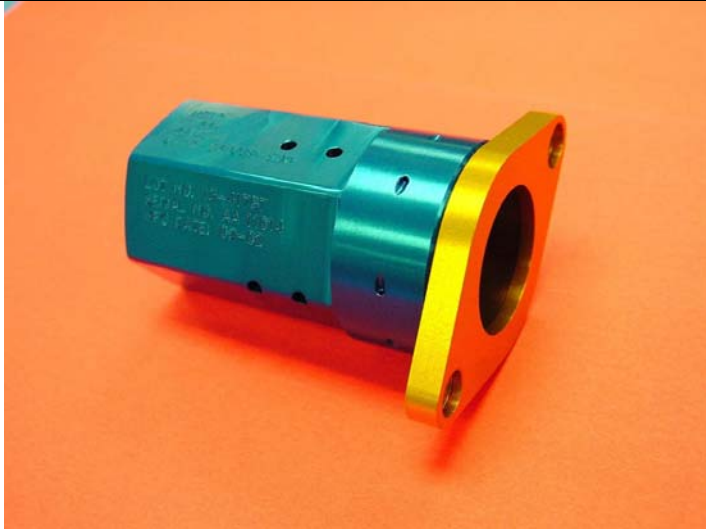


24225 GARNIER STREET • TORRANCE • CALIFORNIA 90505-5355 • U.S.A.
 TELEPHONES: (310) 784-2100 • (800) 733-0321 • FAX: (310) 326-0797
 E-mail: info@hstc.com

Issue Date: 12NOV02

BOLT EXTRACTOR

PART NUMBER	MODEL	USED ON
Size dependent	SH300	1/4 - 1.00 inch Separation Nut



FUNCTIONAL DESCRIPTION

- SH300 Bolt Extractor is designed to extract and capture a tension bolt after separation.
- It prevents potential structural damage or component malfunction due to bolt ejection. The Bolt Extractor absorbs the shock imparted by the ejected bolt, retains the bolt, and prevents it from rebounding into its hole and becoming trapped by the structure.
- SH300 is re-usable by merely replacing the shock absorbent cushion. It is not necessary to replace the housing case.
- Design, manufacture, and acceptance testing is in accordance with applicable United States & International Space Specifications.

QUALIFICATION	SH300 is currently qualified for all Space Launch Vehicles, Space Probes and Satellite systems use.
----------------------	--

The basic design is made of Aluminum to minimize weight. It may be produced of other metals to meet customer requirements. The photograph depicts a hex model – customized designs are available to meet specific customer application.

Strength	Capable of extracting and capturing bolts ejected by Hi-Shear Separation Nuts
Temperature	-260°F to +300°F
Environments	Meets all existing environmental space specifications
Material	7075 Aluminum Alloy
Special needs	Can be custom ordered to meets specific requirements
Reliability	0.9995 @ 95% +77°F
Mounting	As shown, mounting plate provided
Weight	165 grams (0.4 pounds) for 1/2 inch size
Service Life	Not a design consideration
Operating Life	Not a design consideration
Shelf life	Not a design consideration
Maintainability	No periodic preventative maintenance required
Re-usability	Unit is re-useable





24225 GARNIER STREET • TORRANCE • CALIFORNIA 90505-5355 • U.S.A.
 TELEPHONES: (310) 784-2100 • (800) 733-0321 • FAX: (310) 326-0797
 E-mail: info@hstc.com

Issue Date: 12NOV02

BOLT EXTRACTOR

PART NUMBER	MODEL	USED ON
Size dependent	SH300	1/4 - 1.00 inch Separation Nut

How to order: Order by Assembly Number as listed in the table and specify Bolt Shank Diameter. For example – to order a Bolt Extractor for a 3/8 inch bolt – specify as follows:
 Part Number of Bolt Extractor Assembly – specify quantity required.

AVAILABLE MODEL SIZES

MS2000 Bolt Shank Diameter	Foot Print		Typical Overall Height	Height Bolt Length, Minimum	Mounting Hole Spacing	Assembly Model Number
	Length	Width				
1/4	2.125	1.250	1.750	1.125	1.625	SH300-2
3/8	2.500	1.500	2.500	1.200	2.000	SH300-3
1/2	2.750	1.690	3.000	1.280	2.250	SH300-4
5/8	3.250	2.000	3.750	1.375	2.625	SH300-5
3/4	3.625	2.250	4.500	1.475	3.000	SH300-6
7/8	3.875	2.500	5.000	1.550	3.250	SH300-7
1.00	4.250	2.875	5.750	1.650	3.625	SH300-8

Depicted is the 1/2 inch bolt extractor

