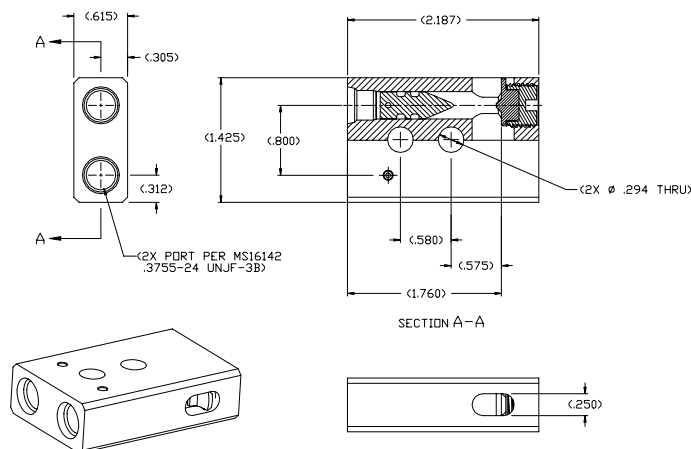




24225 GARNIER STREET • TORRANCE • CALIFORNIA 90505-5355 • U.S.A.  
 TELEPHONES: (310) 784-2100 • (800) 733-0321 • FAX: (310) 326-0797  
 E-mail: marketing@hstc.com

CABLE & BOLT CUTTER, REDUNDANT	Datasheet Page 1 of 2	Orig. issue: 20MAR01 Rev. D: 20JUL06
DEVICE	Bolt, Rod, & Cable Cutter	DISPOSITIF
TYPE	Model SL 1056 - PN 9364262	REFERENCE
<b>1. PERFORMANCES</b> <ul style="list-style-type: none"> <li>Standard material cutting NSI or PC-23 power cartridge</li> <li>PC-154 power cartridge</li> <li>Functioning time</li> <li>Hermeticity sealing</li> <li>Redundancy</li> </ul>	0.150 inch (3.8 mm) $\varnothing$ titanium rod 0.079 inch (2-mm) $\varnothing$ steel cable 0.150 inch (3.8mm) $\varnothing$ steel rod 0.190 inch (5.0mm) $\varnothing$ titanium rod <10 ms (I= 5A) < 10 <sup>-6</sup> atm. Cm <sup>3</sup> / s (He) b.a.f. Dual cartridges / blades & bores	<b>1. PERFORMANCES</b> <ul style="list-style-type: none"> <li>Nature du matériau à couper</li> <li>Nsi or PC-23 cartouches de pression</li> <li>PC-154 cartouche de pression</li> <li>Temps de fontionnement</li> <li>Degré d'herméticité</li> <li>Redondance</li> </ul>
<b>2. MECHANICAL CHARACTERISTICS</b> <ul style="list-style-type: none"> <li>Weight</li> <li>Electric connection</li> </ul> <b>MATERIALS</b> <ul style="list-style-type: none"> <li>Body</li> <li>Blade</li> <li>Hermetic seal (cartridge)               <ul style="list-style-type: none"> <li>Feed through</li> <li>Front</li> </ul> </li> </ul>	90 g MS53116ES-2S / PC23  Aluminum, Anodized Tool Steel, Plated  Glass to metal seal	<b>2. CARACTERISTICQUES MECANIKUES</b> <ul style="list-style-type: none"> <li>Masse</li> <li>Connexion électrique</li> </ul> <b>MATERIAUX</b> <ul style="list-style-type: none"> <li>Corps</li> <li>Lame</li> <li>Herméticité (cartouches)               <ul style="list-style-type: none"> <li>Passage électrique</li> <li>Avant</li> </ul> </li> </ul>
FIXING MODE	Clamp or bolts	MODE DE FIXATION
<b>3. ELECTRICAL CHARACTERISTICS</b> <ul style="list-style-type: none"> <li>Bridgewire number</li> <li>Bridgewire resistance</li> <li>Insulation resistance</li> <li>Leads resistivity</li> <li>Dielectric strength</li> <li>Static sensitivity               <ul style="list-style-type: none"> <li>All leads shorted to case</li> <li>Between leads</li> </ul> </li> </ul>	1 1.05 $\pm$ 0.1 $\Omega$ > 1000 M $\Omega$ / 500 VDC  > 100 $\mu$ A / 200 VAC  25 Kv / 500 pF / 5000 $\Omega$	<b>3. CARACTERISTIQUES ELECTRIQUES</b> <ul style="list-style-type: none"> <li>Nombre de ponts-fusibles</li> <li>Résistance du filament</li> <li>Résistance d'isolement</li> <li>Résistance des conducteurs</li> <li>Rigidité diélectrique</li> <li>Décharges électrostatiques               <ul style="list-style-type: none"> <li>Entre circuit et masse</li> <li>Entre fils</li> </ul> </li> </ul>
<b>CURRENT RATINGS</b> <ul style="list-style-type: none"> <li>Nominal firing current</li> <li>All-fire current</li> <li>No-Fire current</li> <li>Safe no-fire current for testing</li> </ul>	> 5 A / 4 ms 3.5 A (R<0,999 95%) +77°F 1A/1W 5min (-165°F +165°F) < 10mA	<b>COURANTS LIMITS</b> <ul style="list-style-type: none"> <li>Courant de mise à feu nominal</li> <li>Courant de feu 100%</li> <li>Courant maxi de non feu</li> <li>Courant maxi de contrôle</li> </ul>

SL-1056 cutter





24225 GARNIER STREET • TORRANCE • CALIFORNIA 90505-5355 • U.S.A.  
 TELEPHONES: (310) 784-2100 • (800) 733-0321 • FAX: (310) 326-0797  
 E-mail: marketing@hstc.com

CABLE & BOLT CUTTER, REDUNDANT	Datasheet Page 2 of 2	Orig. issue: 20MAR01 Rev. D: 20JUL06
4. PYROTECHNIC CHARACTERISTICS <ul style="list-style-type: none"> <li>• Initiator type</li> <li>• Principal pyrotechnic load</li> </ul>	NSI / PC-23 /PC-154 (AR) 114 mg ZPP powder + boosters	4. CARACTERISTIQUES PYROTECHNIQUES <ul style="list-style-type: none"> <li>• Type d'initiateur</li> <li>• Charge pyrotechniques principale</li> </ul>
5. ENVIRONMENTAL TEST SPECIFICATIONS <ul style="list-style-type: none"> <li>• Mechanical shock</li> <li>• Acceleration</li> <li>• Sinus vibration</li> <li>• Random vibration</li> <li>• Humidity</li> <li>• Thermal shock</li> <li>• Thermal vacuum</li> <li>• Operating temperature</li> <li>• Storage life</li> </ul>	100g 6 shock impacts /11ms 3axis  25 Hz 2g 28.15 grms 3 axes 5 min ea axis MIL-E-5277C Proc. 1 -134°F +160°F 20 cycles 1 hr +160°F 1x10 <sup>-6</sup> Torr (650K alt) -134°F 1x10 <sup>-6</sup> Torr (96 hr) -292°F (-144°C) +201°F (+94°C) 10 years	5. RESISTANCE AUX CONDITIONS D'ENVIRONNEMENT <ul style="list-style-type: none"> <li>• Shocs mécaniques</li> <li>• Accélération</li> <li>• Vibrations sinusoïdales</li> <li>• Vibrations aléatoires</li> <li>• Humidité</li> <li>• Chocs thermiques</li> <li>• Vide thermique</li> <li>• Températures de fontionnement</li> <li>• Durée de stockage</li> </ul>
6. DEVELOPMENT STATUS <ul style="list-style-type: none"> <li>- References:               <ul style="list-style-type: none"> <li>• Development date</li> <li>• Qualification test report</li> <li>• Last verification of qualification date</li> </ul> </li> <li>- Flight applications:               <ul style="list-style-type: none"> <li>• Projects</li> <li>• Dates</li> <li>• Users</li> </ul> </li> </ul>	1986 US Satellites  1991 (PC23) US satellites EOS / GOES / JAPANSAT 1982 – present BOEING, HUGHES, SS/LORAL	6. CONDITIONS DE DEVELOPPEMENT <ul style="list-style-type: none"> <li>- Références:               <ul style="list-style-type: none"> <li>• Date du développement</li> <li>• Rapport de qualification</li> <li>• Contrôls de qualification ultérieurs</li> </ul> </li> <li>- Applications spatiales:               <ul style="list-style-type: none"> <li>• Projets</li> <li>• Dates</li> <li>• Utilisateurs</li> </ul> </li> </ul>
<p style="text-align: center;">SL-1056 Cutter with dual PC-23 Initiators (shown with “open” slot)</p> <p>The image shows a brass-colored metal cutter component with two circular initiator ports on the top surface. A cylindrical rod is positioned horizontally in front of the component. The component has markings: '82577 SOCN' and '259801-001 SER NO 098'.</p>	<p style="text-align: center;">SL-1056 Cutter with dual PC-23 Initiators + Pressure Cartridges (shown with “closed” slot)</p> <p>The image shows the same brass-colored metal cutter component, but with two red pressure cartridges inserted into the initiator ports. A cylindrical rod is positioned horizontally in front of the component. The component has markings: 'HSTC/174888' and 'SL1056-3870-4244'.</p>	