

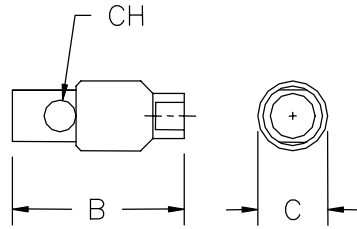


24225 GARNIER STREET • TORRANCE • CALIFORNIA 90505-5355 • U.S.A.
 TELEPHONES: (310) 784-2100 • (800) 733-0321 • FAX: (310) 326-0797
 E-mail: info@hstc.com

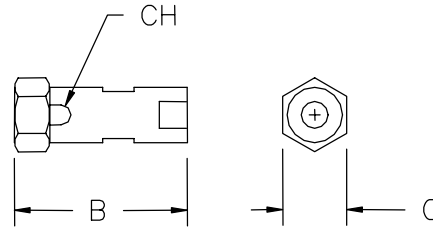
Issue Date: 1-3-01
 Revision: NC
 Page 1 of 6

PRODUCT LINE SUMMARY CABLE & ROD CUTTERS (SL SERIES)

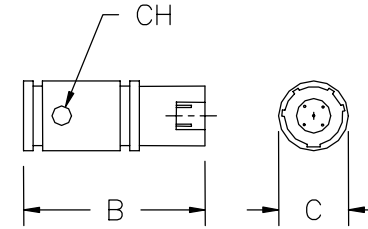
"A"
 (PRESSURE CARTRIDGE
 ACTUATED)



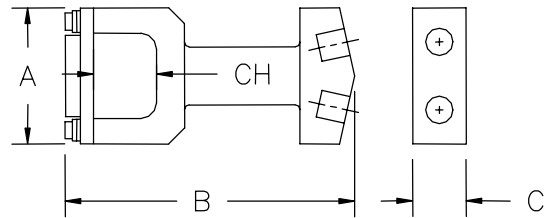
"B"
 (PRESSURE CARTRIDGE
 ACTUATED)



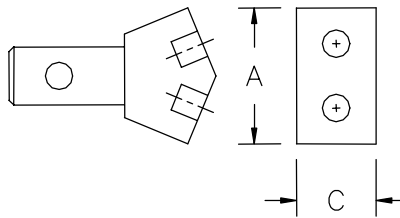
"C"
 (EXPLODING BRIDGEWIRE
 ACTUATION)



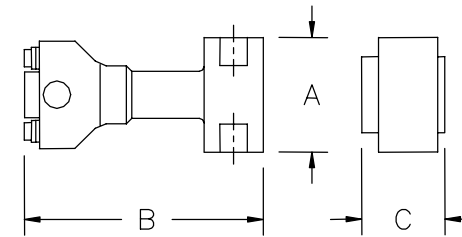
"D"
 (PRESSURE CARTRIDGE
 ACTUATED)



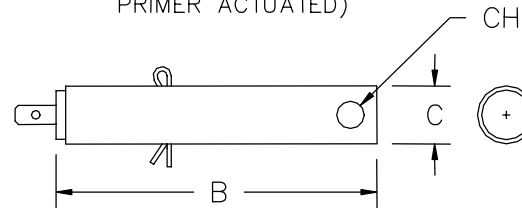
"E"
 (PRESSURE CARTRIDGE
 ACTUATED)



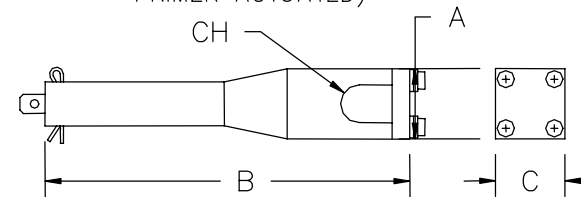
"F"
 (PRESSURE CARTRIDGE
 ACTUATED)



"G"
 (LANDYARD PULL-
 PRIMER ACTUATED)



"H"
 (LANDYARD PULL-
 PRIMER ACTUATED)

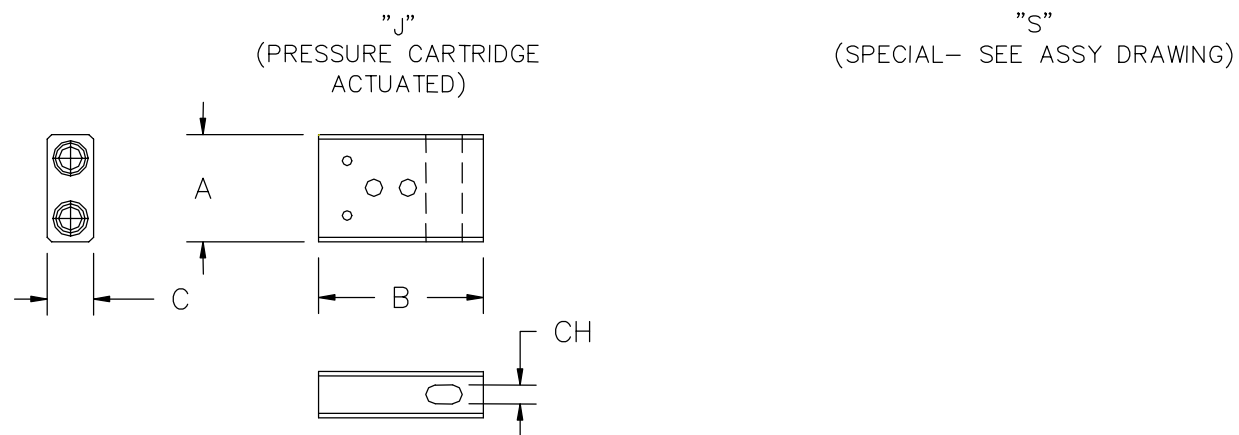




24225 GARNIER STREET • TORRANCE • CALIFORNIA 90505-5355 • U.S.A.
TELEPHONES: (310) 784-2100 • (800) 733-0321 • FAX: (310) 326-0797
E-mail: info@hstc.com

Issue Date: 1-3-01
Revision: NC
Page 2 of 6

PRODUCT LINE SUMMARY CABLE & ROD CUTTERS (SL SERIES)



SEE TABULATION TABLES

NOTES: All dimensions given in inches.
All units contain a shear pin to lock cutter in place
Model no.'s asterisked include power cartridge or power charge as part of assembly



24225 GARNIER STREET • TORRANCE • CALIFORNIA 90505-5355 • U.S.A.
 TELEPHONES: (310) 784-2100 • (800) 733-0321 • FAX: (310) 326-0797
 E-mail: info@hstc.com

Issue Date: 1-3-01
 Revision: NC
 Page 3 of 6

**PRODUCT LINE SUMMARY
 CABLE & ROD CUTTERS (SL SERIES)**

SP Model No.	Part No.	Config. Type	ENVELOPE DIMENSIONS			Cutting, Hole Dia./ Min. Dim. (CH)	MOUNTS				CARTRIDGE DETAILS		MATERIAL COMPOSITION		
			"A"	"B"	"C"		EXTERNAL THREAD Size	Depth	Free Hanging	Other (See Assy Dwg)	No.	Port Size	Body	Cutter	Anvil
1010	9361252	G	-	4.86	.50	.238	-	-	-	X	(Lanyard	Primer)	303 S.S.	303 S.S.	303 S.S.
1011	9361208	A (Less Thd)	-	1.35	.50	.250	-	-	X	-	1	3/8-24	15-5PH	15-5PH	2024-T4
1011A	9361698	A (Less Thd)	-	1.35	.50	.250	-	-	X	-	1	3/8-24	7075-T6	INC. 718	2024-T4
1011T,TA,TB	9362013	A	-	1.25	.50	.250	9/16-24	.484	-	-	1	3/8-24	15-5PH	15-5PH	2024-T4
1012	939555	G	-	3.24	.32	.172	-	-	X	-	(Lanyard	Primer)	2024-T3	Lexan Rod	(Body Wall)
1013-6	9361705	A (Less Thd)	-	2.38	.75	.438	-	-	X	-	1	1/2-20	15-5PH	15-5PH	15-5PH
1013T-6	9362382	A	-	2.38	.75	.438	7/8-16	1.105	-	-	1	1/2-20	15-5PH	15-5PH	15-5PH
1013T-10	9361466	A	-	2.88	1.00	.683	1-1/8-12	.906	-	-	1	1/2-20	15-5PH	AISI M2 Tool Stl	15-5PH
1013T-16	9361866	A	-	4.00	1.50	1.066	1-5/8-12	1.38	-	-	1	1/2-20	15-5PH	AISI M2 Tool Stl	15-5PH
1016	9361498	A (modif)	1.50	3.81	2.00	1.062	-	-	X	-	1	1/2-20	15-5PH	AISI M2 Tool Stl	15-5PH
1019	9361274	S	.75	2.67	.50	N/A See Assy Pin	1/2-20	.700	-	-	(CAM	Actuated Primer)	303 S.S.	N/A See Assy Dwg	N/A See Assy Dwg

NOTES: All dimensions given in inches.
 All units contain a shear pin to lock cutter in place
 Model no.'s asterisked include power cartridge or power charge as part of assembly



24225 GARNIER STREET • TORRANCE • CALIFORNIA 90505-5355 • U.S.A.
 TELEPHONES: (310) 784-2100 • (800) 733-0321 • FAX: (310) 326-0797
 E-mail: info@hstc.com

Issue Date: 1-3-01
 Revision: NC
 Page 4 of 6

PRODUCT LINE SUMMARY CABLE & ROD CUTTERS (SL SERIES)

SP Model No.	Part No.	Config. Type	ENVELOPE DIMENSIONS			Cutting Hole	MOUNTS				CARTRIDGE DETAILS		MATERIAL COMPOSITION		
			"A"	"B"	"C"	Dia./ Min. Dim. (CH)	EXTERNAL THREAD Size	Depth	Free Hanging	Other (See Assy Dwg)	No.	Port Size	Body	Cutter	Anvil
1021*	9361283	C	-	1.31	.50	.187	-	-	X	-	(Exploding)	Bridgewire	303 S.S.	Lexan Rod	(Body Wall)
1022,C	9361300	B	-	2.19	.63	.218	-	-	X	-	1	3/8-24	303 S.S.	AISI M2 Tool Stl	303 S.S.
1022A*	9361527	B	(Same as	936100	Except	PC20-003	Cartridge	Added							
1022B	9363208	B	-	2.19	.63	.250	-	-	X	-	1	3/8-24	303 S.S.	AISI M2 Tool Stl	303 S.S.
1025	9361331	A (Less Thd)	-	2.15	.75	.375	-	-	X	-	1	3/8-24	303 S.S.	AISI M2 Tool Stl	303 S.S.
1030*	9361411	C	-	1.41	.57	.187	-	-	X	-	Exploding	Bridgewire	304 S.S.	Lexan Rod	(Body Wall)
1030-003*	9361462	C	(Same as	9361411	Except for	Different	Bridgewire	Assy							
1033-12*	9361636	G (No Lanyard)	-	3.55	.45	.189	-	-	X	-	1	3/8-24	303 S.S.	Lexan Rod	(Body Wall)
1034,B,E*	9361910	A (Less Thd)	-	2.33	.56	.256	-	-	X	-	1	3/8-24	15-5PH	Se Tool Stl	C1212 Stl
1034A*	9361529	A (Less Thd)	-	Same as	9361910	Except for	Different	Tagging	And	Grease	Compound				

NOTES: All dimensions given in inches.
 All units contain a shear pin to lock cutter in place
 Model no.'s asterisked include power cartridge or power charge as part of assembly



24225 GARNIER STREET • TORRANCE • CALIFORNIA 90505-5355 • U.S.A.
 TELEPHONES: (310) 784-2100 • (800) 733-0321 • FAX: (310) 326-0797
 E-mail: info@hstc.com

Issue Date: 1-3-01
 Revision: NC
 Page 5 of 6

PRODUCT LINE SUMMARY CABLE & ROD CUTTERS (SL SERIES)

SP Model No.	Part No.	Config. Type	ENVELOPE DIMENSIONS			Cutting, Hole Dia./ Min. Dim. (CH)	MOUNTS				CARTRIDGE DETAILS		MATERIAL COMPOSITION		
			"A"	"B"	"C"		EXTERNAL THREAD Size Depth	Free Hanging	Other (See Assy Dwg)	No.	Port Size	Body	Cutter	Anvil	
1034D	9362231	A (Less Thd)	(Same as	9361910	Less -	PC20	007 Power	Cartridge							
1034F*	9362989	A	(Same as	9361910	Except for	Different	Power	Cartridge							
1036*	9361562	C	-	1.31	.50	.062	-	-	X	-	Exploding	Bridgewire	2024-T3	Lexan Rod	2024-T3
1037	9361675	D	3.00	7.22	1.50	2.060	-	-	X	-	2	7/8-14	316 S.S.	15-5PH	321 S.S.
1038A, B	9361821	F	2.75	5.81	2.19	.750	-	-	-	X	2	7/8-14	316 S.S.	S2 Tool Stl	316 S.S.
1041,A	9361829	G	-	4.38	.32	.173	-	-	X	-	(Lanyard	Primer)	304 S.S.	Lexan Rod	(Body Wall)
1041-2,-3	9361883	G	-	4.38	.32	.173	-	-	X	-	(Lanyard	Primer)	304 S.S.	Lexan Rod	(Body Wall)
1041-2,-3	9361883	G	-	4.38	.32	.173	-	-	X	-	(Lanyard	Primer)	304 S.S.	Lexan Rod	(Body Wall)

NOTES: All dimensions given in inches.
 All units contain a shear pin to lock cutter in place
 Model no.'s asterisked include power cartridge or power charge as part of assembly



24225 GARNIER STREET • TORRANCE • CALIFORNIA 90505-5355 • U.S.A.
 TELEPHONES: (310) 784-2100 • (800) 733-0321 • FAX: (310) 326-0797
 E-mail: info@hstc.com

Issue Date: 1-3-01
 Revision: NC
 Page 6 of 6

PRODUCT LINE SUMMARY CABLE & ROD CUTTERS (SL SERIES)

SP Model No.	Part No.	Config. Type	ENVELOPE DIMENSIONS			Cutting, Hole Dia./ Min. Dim. (CH)	MOUNTS			CARTRIDGE DETAILS		MATERIAL COMPOSITION			
			"A"	"B"	"C"		EXTERNAL THREAD Size Depth	Free Hanging	Other (See Assy Dwg)	No.	Port Size	Body	Cutter	Anvil	
1044	9361916	B	-	3.42	1.37	.682	-	-	X	-	1	½-20	15-5PH	AISI M2 Tool Stl	15-5PH
1047,A	9363012	E	1.29	2.21	.75	.270	-	-	X	-	2	3/8-24	303 S.S.	AISI S2 Tool Stl	15-5PH
1049*	9362977	B	-	3.77	1.37	.875	-	-	X	-	1	3/8-24	15-5PH	15-5PH	6061-T6
1052-1	9362550	A	-	1.47	.50	.250	5/8-24	.484	-	-	1	3/8-24	15-5PH	15-5PH	2024-T4
1053*	9362746	S	3.25	6.39	3.00	1.360	-	-	X	-	2	7/8-14	15-5PH	15-5PH	15-5PH
1054-1,-2*	9362809	S	3.00	12.25	3.00	.562	-	-	X	-	1	7/8-14	15-5PH 303 S.S.	303 S.S.	15-5PH
1055-1*	9363234	A (Less Thd)	-	1.75	.50	.141	-	-	X	-	1	3/8-24	15-5PH	AISI M2 Tool Stl	(Body End)
1056-1	9363258	S	1.41	2.19	.62	.250	-	-	-	X	2	3/8-24	7075-T7	H11 Tool Stl	304 S.S.
1057	9363303	S	4.00	8.85	2.00	2.125	-	-	-	X	2	7/8-14	316 S.S.	15-5PH	316 S.S.

NOTES: All dimensions given in inches.
 All units contain a shear pin to lock cutter in place
 Model no.'s asterisked include power cartridge or power charge as part of assembly