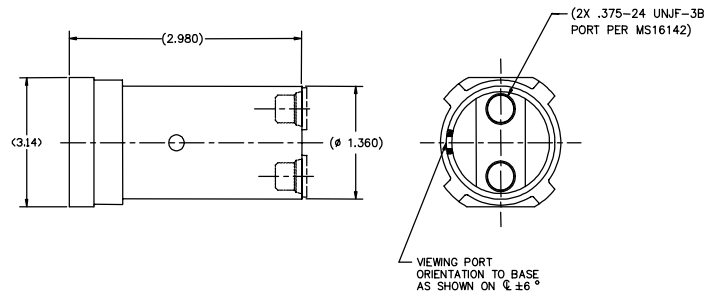




24225 GARNIER STREET • TORRANCE • CALIFORNIA 90505-5355 • U.S.A.
 TELEPHONES: (310) 784-2100 • (800) 733-0321 • FAX: (310) 326-0797
 E-mail: marketing@hstc.com

SEPARATION NUT	Datasheet	Page 1 of 3	Orig. date: 22AUG02 Rev. B – 14OCT02
DEVICE	½ INCH Separation Nut		DISPOSITIF
TYPE	Model SN-9400-4 series		REFERENCE
1. PERFORMANCES			1. PERFORMANCES
<ul style="list-style-type: none"> Design Load (limit) Tensile proof load capability Tensile strength (yield) Temperature capability Suggested initiator Booster Cartridge (when needed) Function time Redundancy Principal release system 	17,000 lbf 7,000 lbf 20,000 lbf -90°F(-68°C) to +190°F(+88°C) PC23 (NSI equivalent) PC154 < 10 milliseconds Dual PC23 initiators Threaded segments (3)		<ul style="list-style-type: none"> Tenue mecanique Résistance à la rupture Résistance mécanique (limite) Resistance de temperature Suggéré initiateur Cartouche de pression augmente Temps de fonctionnement Redondance Méthode lâché principe
2. MECHANICAL CHARACTERISTICS			2. CARACTERISTIQUES MECANIQUES
<ul style="list-style-type: none"> Weight Bolt insertion Shock output OPTIONAL FEATURES <ul style="list-style-type: none"> Cartridge manifold Bolt ejector Flange Reset Reusability Cycle MATERIALS <ul style="list-style-type: none"> Body Segments 	213 g As needed <4000 g (2X) .375-24 UNJF-3B With or without bolt ejector With or without flange mounting Reset for pneumatic operation 20 - 100 Aluminum 7075-T7351 15-5 PH stainless steel		<ul style="list-style-type: none"> Masse Dans une épreuve de boulon Rendement de chocs CARACTERISTIQUES FACULTATIF <ul style="list-style-type: none"> Cartouche multiple varié Boulon éjecter Collet Opération de Répétition Répéter MATERIAUX <ul style="list-style-type: none"> Corps Segments
BOLT TYPE	½ inch bolt		REFERENCE DE BOULON
TIGHTENING TORQUE	Load cell / strain gages		COUPLE DE SERRAGE
3. ELECTRICAL CHARACTERISTICS	28 V, 5A, 10KJ		3. CARACTERISTIQUES ELECTRIQUES

Separation Nut – dual straight in ports – weight 213 g

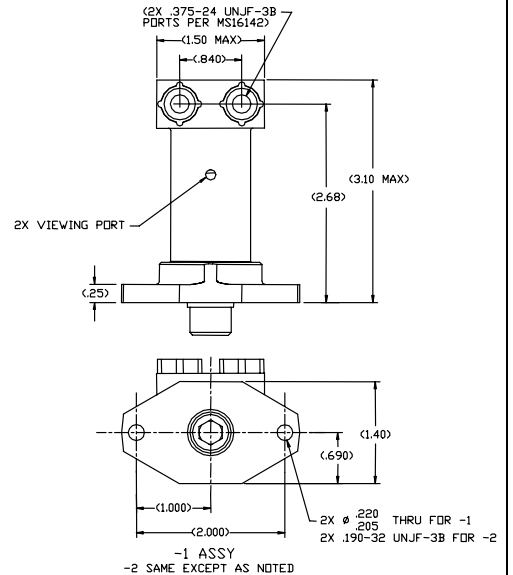




24225 GARNIER STREET • TORRANCE • CALIFORNIA 90505-5355 • U.S.A.
 TELEPHONES: (310) 784-2100 • (800) 733-0321 • FAX: (310) 326-0797
 E-mail: marketing@hstc.com

SEPARATION NUT	Datasheet	Page 2 of 3	Orig. date: 22AUG02 Rev. B – 14OCT02
4. PYROTECHNIC CHARACTERISTICS <ul style="list-style-type: none"> Initiator type Principal pyrotechnic load Booster Cartridge (when needed) 	PC 23 (NSI equivalent) 114 mg ZPP PC154		4. CARACTERISTIQUES PYROTECHNIQUES <ul style="list-style-type: none"> Type d'initiateur Charge pyrotechniques principale Cartouche augmente
5. ENVIRONMENTAL TEST SPECIFICATIONS <ul style="list-style-type: none"> Mechanical shock Random vibration Humidity Operating temperature Storage life 	5,000 g 24 grms < 90% RH -90°F(-68°C) to +190°F(+88°C) 10 years		5. RESISTANCE AUX CONDITIONS D'ENVIRONNEMENT <ul style="list-style-type: none"> Chocs mécaniques Vibrations aléatoires Humidité Températures de fonctionnement Durée de stockage
6. DEVELOPMENT STATUS <ul style="list-style-type: none"> References: <ul style="list-style-type: none"> Development date Qualification test report Last verification of qualification date Flight applications: <ul style="list-style-type: none"> Projects (planned) Dates Users 	1980 Various (customer specific) 2001 US Satellites & launch vehicles 1980 to present Lockheed, Boeing, TRW, NASA		6. CONDITIONS DE DEVELOPPEMENT <ul style="list-style-type: none"> Références: <ul style="list-style-type: none"> Date du développement Rapport de qualification Contrôls de qualification ultérieurs Applications spatiales: <ul style="list-style-type: none"> Projets Dates Utilisateurs

Separation Nut – dual 90° ports – weight 201 g

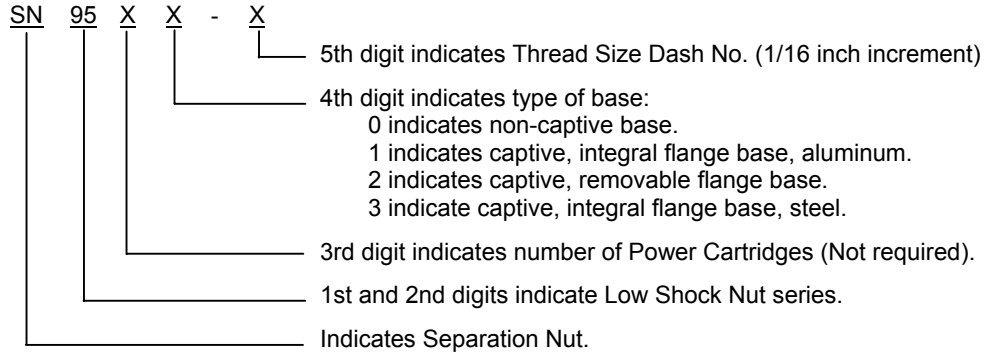




24225 GARNIER STREET • TORRANCE • CALIFORNIA 90505-5355 • U.S.A.
 TELEPHONES: (310) 784-2100 • (800) 733-0321 • FAX: (310) 326-0797
 E-mail: marketing@hstc.com

SEPARATION NUT	Datasheet Page 3 of 3	Orig. date: 22AUG02 Rev. B – 14OCT02G02
DEVICE	½ INCH Separation Nut	DISPOSITIF
TYPE	Model SN-9400-4 series	REFERENCE

SALES NUMBER IDENTIFICATION



ORDERING EXAMPLE

