

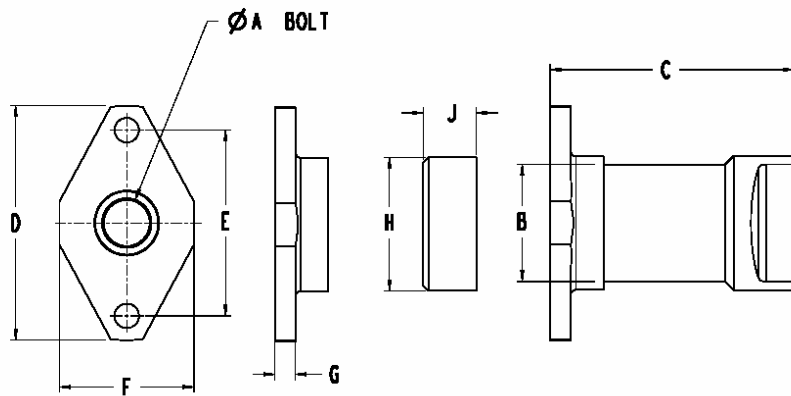


**PRODUCT LINE SUMMARY**  
**LOW SHOCK SEPARATION NUT (SN9400 SERIES)**

JANUARY 2001

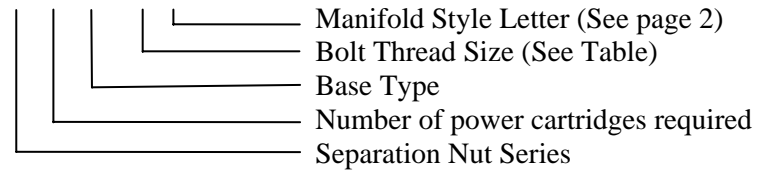
FOR LETTER SIZE IDENTIFICATION - GO TO PAGE 3

HOW TO ORDER



**SALES NUMBER IDENTIFICATION**

SN 94 X X - X X



**BASE TYPE – GO TO PAGE 3**

- 0 Non captive Base
- 1 Captive, Integral flange base, aluminum
- 2 Captive, Removable flange base
- 3 captive, integral flange base, steel

| Thread Size<br>Dash No. | Thread Size<br>(UNF) | Tensile<br>Proof Load (Lbs)<br>MIL-B-7838 | Tensile<br>Function Load (Lbs)<br>MIL-HDBK-5 |
|-------------------------|----------------------|---|--|
| -2                      | 1/4-28               | 6,400                                     | 5,000  |
| -516                    | 5/16-24              | 10,200                                    | 8,200  |
| -3                      | 3/8-24               | 15,200                                    | 12,700                                       |
| -716                    | 7/16-20              | 20,600                                    | 17,100                                       |
| -4                      | 1/2-20               | 27,400                                    | 23,400                                       |
| -916                    | 9/16-18              | 34,800                                    | 29,800                                       |
| -5                      | 5/8-18               | 43,600                                    | 38,000                                       |
| -6                      | 3/4-16               | 63,200                                    | 55,600                                       |
| -7                      | 7/8-14               | 86,100                                    | 76,200                                       |
| -8                      | 1-12                 | 114,000                                   | 102,500                                      |
| -10                     | 1-1/4-12             | 155,000                                   | 115,000                                      |

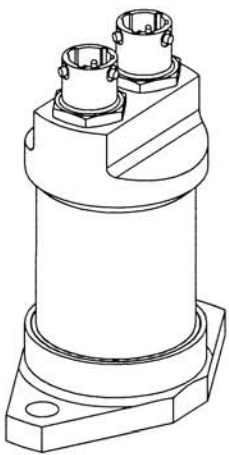


**PRODUCT LINE SUMMARY  
LOW SHOCK SEPARATION NUT (SN9400 SERIES)**

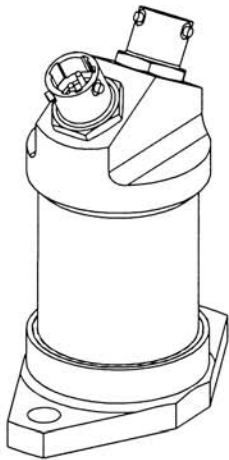
JANUARY 2001

HOW TO ORDER

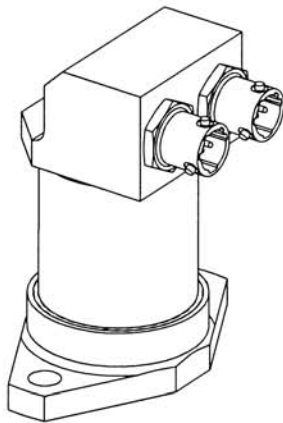
FOR SALES NUMBER IDENTIFICATION - GO TO PAGE 1



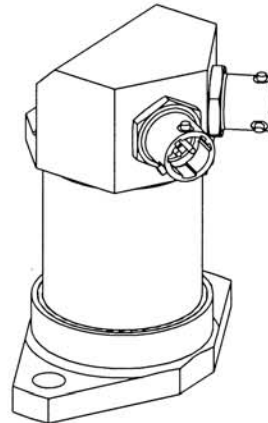
A



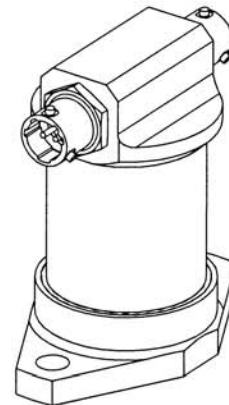
B



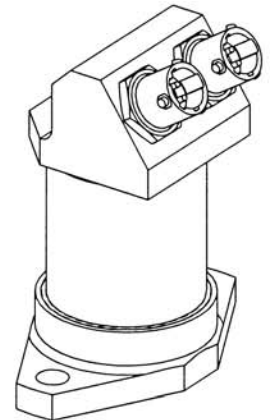
C



D



E



F

**MANIFOLD CONFIGURATIONS**



**PRODUCT LINE SUMMARY**  
**LOW SHOCK SEPARATION NUT (SN9400 SERIES)**

JANUARY 2001

| MODEL NO.   | PART NO. | BOLT<br>SIZE<br>A | BODY<br>DIA<br>B | UNIT<br>LENGTH<br>C | FLANGE TYPES - DIMENSIONS |      |      |     |             |     | MATERIAL COMPOSITION |         |                  |                 |
|-------------|----------|-------------------|------------------|---------------------|---------------------------|------|------|-----|-------------|-----|----------------------|---------|------------------|-----------------|
|             |          |                   |                  |                     | TYPE<br>"1"               |      |      |     | TYPE<br>"0" |     | HOUSING              | CAP     | HI-LOAD<br>PARTS | BOLT<br>EJECTOR |
|             |          |                   |                  |                     | D                         | E    | F    | G   | H           | J   |                      |         |                  |                 |
| SNR9422-2   | 9362954  | .250              | .91              | 1.98                | 2.24                      | 1.75 | 1.22 | .25 |             |     | 6061-T6              | 6061-T6 | 17-4PH           | Yes             |
| SNR9412-516 | 9362340  | .3125             | 1.03             | 2.65                | 2.00                      | 1.41 | 1.38 | .10 |             |     | 7075-T7              | 7075-T7 | 17-4PH           | Yes             |
| SN9421-3    | 9362236  | .375              | 1.09             | 2.13                | 2.50                      | 2.00 | 1.38 | .26 |             |     | 7075-T7              | 7075-T7 | 17-4PH           | Yes             |
| SN9421-4    | 9362060  | .500              | 1.36             | 2.48                | 2.74                      | 2.21 | 1.78 | .22 |             |     | 7075-T7              | 7075-T7 | 17-4PH           | Yes             |
| SN9420-4    | 9362599  | .500              | 1.36             | 3.21                |                           |      |      |     | 1.55        | .74 | 7075-T7              | 7075-T7 | INCONEL<br>718   | Yes             |
| SN9422-4    | 9362698  | .500              | 1.36             | 2.66                | 2.71                      | 2.19 | 1.90 | .35 |             |     | 6061-T6              | 6061-T6 | 17-4PH           | Yes             |
| SNU9410-4   | 9362205  | .500              | 1.50             | 4.55                |                           |      |      |     |             |     | 17-4PH               | 17-4PH  | 17-4PH           | Yes             |
| SN9421-5    | 9362738  | .625              | 1.60             | 3.40                | 3.00                      | 2.48 | 1.90 | .22 |             |     | 7075-T7              | 7075-T7 | 17-4PH           | Yes             |
| SNR9410-5   | 9362849  | .625              | 1.90             | 5.03                |                           |      |      |     |             |     | 17-4PH               | 17-4PH  | 17-4PH           | Yes             |
| SNU9422-6   | 9362673  | .750              | 2.20             | 4.75                | 3.55                      | 3.09 | 3.55 | .42 |             |     | 7075-T7              | 7075-T7 | 17-4PH           | Yes             |
| SN9411-1    | 9363245  | .875              | 2.21             | 3.27                |                           |      |      |     |             |     | 7075-T7              | 7075-T7 | 17-4PH           | Yes             |
| SNR9412-8   | 9362822  | 1.000             | 2.95             | 4.30                | 5.00                      | 4.50 | 3.60 | .50 |             |     | 7075-T7              | 7075-T7 | 17-4PH           | Yes             |

All dimensions in inches

List presents data for typical sizes of Separation Nuts

All SN 9400 series can be tailored to customer requirements for specific load characteristics



ISO 9001 A9813



**PRODUCT LINE SUMMARY  
LOW SHOCK SEPARATION NUT (SN9400 SERIES)**

JANUARY 2001

| MODEL NO.       | PART NO. | BOLT SIZE | CARTRIDGE PORTS | MANIFOLD ORIENTATION | FEATURES  | PRESSURE CARTRIDGE | TEST OUTPUT PSI-10CC | TEST SPECIFICATION | CUSTOMER                |
|-----------------|----------|-----------|-----------------|----------------------|---|--------------------|----------------------|--------------------|-------------------------|
| SN9421-2<br>-2A | 9362242  | .250      | .375-24         | A                    | Flange Base - Bolt Torquing   | PC23-5             | 650                  | 700775<br>700874   | NRL-3461<br>MMC-3805    |
| SNR9422-2       | 9362954  | .250      | .375-24         | C                    | Resettable-Loose Flange-Bolt Torquing   |                    |                      |                    | Nav. Torp. Sta.         |
| SNR9412-516     | 9362340  | .3125     | .500-20         | 1 @ 90°              | Resettable- Loose Flange<br>Manifold Porting - Nut Torquing                     | PC23               | 650                  |                    | LMSC                    |
| SN9421-3        | 9362236  | .375      | .375-24         | A                    | Flange Base-Bolt Torquing   | PC19-17<br>PC19-15 | 650<br>550           | 700775             | NRL 3839,<br>3238, 3402 |
| SN9421-4        | 9362060  | .500      | .375-24         | F                    | Flange Base-Bolt Torquing<br>Turret Ports - Rotatable                           |                    |                      | 700775             | MIT, JPL RI             |
| SN9421-4A       | 9362978  | .500      | .375-24         | A                    | Flange Base-Bolt Torquing<br>Separator Hard Anodized                            | PC 23-5            | 650                  | 700874             | MMC-3805                |
| SN9420-4        | 9362599  | .500      | .500-20         | F                    | No Flange-Cylindrical Base-Bolt Torq.<br>Flat Ramp Keyseat-Separator Hard Anod. |                    |                      | 9362599-836        | JPL-3589                |
| SN9422-4        | 9362698  | .500      | .375-24         | A                    | Loose Flange-Nut or Bolt Torquing   |                    |                      | 700775             | GE                      |
| SNU9410-4       | 9362205  | .500      | .375-24         | 1 @ 90°              | No Flange-Bolt Torquing Underwater  |                    |                      |                    | NASA                    |
| SN9422-4A       | 9362921  | .500      | .375-24         | A                    | Loose Flange Base-Bolt Torquing   |                    |                      |                    | AVCO                    |
| SN9421-5        | 9362738  | .625      | .500-20         | A                    | Flange Base-Bolt Torquing   | PC115-1            | 980                  | 9362738-933        | AVCO-3737               |
| SNR9410-5       | 9362849  | .625      | .500-20         | 1 @ 90°              | Resettable-Nut Torquing<br>Flat Ramp Keyseat-Reset Indicator                    | Pneumatic          |                      | 9362849-912        | BAC-3705                |





**PRODUCT LINE SUMMARY  
LOW SHOCK SEPARATION NUT (SN9400 SERIES)**

JANUARY 2001

| MODEL NO.             | PART NO. | BOLT SIZE | CARTRIDGE PORTS | MANIFOLD ORIENTATION    | FEATURES  | PRESSURE CARTRIDGE         | TEST OUTPUT PSI-10CC | TEST SPECIFICATION          | CUSTOMER        |
|-----------------------|----------|-----------|-----------------|-------------------------|---|----------------------------|----------------------|-----------------------------|-----------------|
| SNR9421-5A            | 9362990  | .625      | .500-20         | A                       | Resettable-Bolt Torquing<br>Flat Ramp Keyseat-Reset Indicator | PC72-9                     | 2185                 | 9362990-971                 | MDAC-3814       |
| SNU9422-6             | 9362673  | .750      | .500-20         | C                       | Resettable-Loose Flange-Underwater                            | Hydraulic                  |                      | None                        | NRL             |
| SNR9412-8             | 9362822  | 1.000     | .500-20         | 1-Axial                 | Resettable-Loose Flange                                       | Pneumatic                  |                      | 700867                      | Bendix-3698     |
| SNR9421-4A            | 9363028  | .500      | .500-20         | 2 @ 180°                | Special Base<br>Bolt Torquing, Resettable                     |                            | 1000                 |                             | MDAC-3869       |
| SN9421-2B             | 9363026  | .250      | .375-24         | A                       | Flange Base<br>Bolt Torquing                                  | PC19-27                    | 750                  | 9363026-001<br>9363026-1003 | Ford-3867       |
| SN9421-3A             | 9363106  | 3/8-24    | .375-24         | A                       | Threaded Base-Bolt Torquing                                   | PC19-31                    | 600                  | 700775                      | Vought-3932     |
| SN9421-7              | 9363089  | 7/8-14    | .500-20         | A                       | Flange Base - Bolt Torquing                                   | PC120-1                    | 1400                 | 700775                      | Boeing-3910     |
| SN9421-7A             | 9363089  | 7/8-14    | .500-20         | A                       | Round Base - Nut Torquing                                     | PC120-1                    | 1400                 | 700775                      | Boeing-4034     |
| SNR9421-3A            | 9363161  | 3/8-24    | .500-20         | 2-Opposed               | Special Manifold Base   | PC125-1                    | 1000                 | 9363161                     | MDAC-3990       |
| SN9421-2C             | 9363153  | 1/4-28    | .375-24         | A                       | Flange Base-Bolt Torquing-No Ejector                          | PC23-5                     | 850                  | 700775                      | J. Hopkins-3992 |
| SN9421-3B             | 9363117  | 3/8-24    | .375-24         | 2-Rt Angle<br>Rotatable | Flange Base-Nut Torquing                                      | PC-126<br>9391506          | 2400<br>2 cc         |                             | Avco-3956       |
| SNR9423-516B          | 9363189  | 5/16-24   | .500-20         | 2 Rt. Angle             | Flange Base-Bolt Torquing                                     | Pneumatic                  |                      |                             | Nazaki-4013     |
| SN9421-5C             | 9363190  | 5/8-18    | .500-20         | 1-Axial                 | Flange Base-Bolt Torquing                                     |                            |                      |                             | MDAC-4022       |
| SNR9423-516A<br>-516C | 9363061  | 5/16-24   | .500-20         | 2 Rt. Angle             | Flange Base-Bolt Torquing                                     | PC117-1<br>9391477-1-1074A | 700                  | 9363062-1091                | GE-3969         |





**PRODUCT LINE SUMMARY  
 LOW SHOCK SEPARATION NUT (SN9400 SERIES)**

JANUARY 2001

| MODEL NO. | PART NO. | BOLT SIZE | CARTRIDGE PORTS | MANIFOLD ORIENTATION | FEATURES   | PRESSURE CARTRIDGE | TEST OUTPUT PSI-10CC | TEST SPECIFICATION | CUSTOMER    |
|-----------|----------|-----------|-----------------|----------------------|--|--------------------|----------------------|--------------------|-------------|
| SN9423-4A | 9363140  | 1/2-20    | .500-20         | A                    | Flange Base-Bolt Torque                              | PC117-1            | 700                  | 9363061-1091       | GE-3969     |
| SN9421-5B | 9363191  | 5/8-18    | .500-20         | 1 Rt. Angle          | Flange Base-Bolt Torque                              |                    |                      |                    | MDAC-4022   |
| SN9411-4  | 9363050  | 1/2-20    | .375-24         | 1-Axial              | Flange Base – Bolt Torque                            | PC23               | 650                  |                    |             |
| SN9411-1  | 9363245  | 7/8-14    | UNF 1 NSI       | Axial                | Mounting Base<br>2 Pc. Sep. W/Ejector With Ring Hook | PC154              | 2500                 | IUS                | Boeing-4113 |
| SN9410-7  | 9363246  | 7/8-14    | UNF 1 NSI       | Axial                | 2 Pc. Sep. W/Ejector With Ring Hook                  | PC154              | 2500                 | IUS                | Boeing-4113 |
| SN9410-5  | 9363400  | 5/8-18    | .375-24         | 1-Axial              | Dual Nut W/Stud System-2Pc. Sep.                     | PC154              | 1450                 | MILSTAR            | Lockheed    |
| SN9411-5  | 9363401  | 5/8-18    | .375-24         | 1-Axial              | Dual Nut W/Stud System-2 Pc. Sep.                    | PC154              | 1450                 | MILSTAR            | Lockheed    |
| SN9423-4C | 9363360  | 1/2-20    | .500-20         | A                    | 1 Pc. Sep. W/Ejector<br>No Ring Hook or Stop Ring    | PC154              | 1050                 | SAT                | GE          |
| SN9423-4D | 9363372  | 1/2-20    | .500-20         | 1 Rt. Angle          | 1 Pc. Sep. W/Ejector<br>No Ring Hook or Stop Ring    | PC154              | 1050                 | SAT                | GE          |
| SN9421-4  | 65010-1  | 1/2-20    | .375-24         | A                    | 1 Pc. Sep. W/Ejector                                 | PC154              | 1050                 | ATLAS V            | Contraves   |
| SN9421-7  | 65011    | 7/8-14    | .375-24         | A                    | 1 Pc. Sep. W/Ejector                                 | PC154              | 2600                 | ATLAS V            | Contraves   |

