

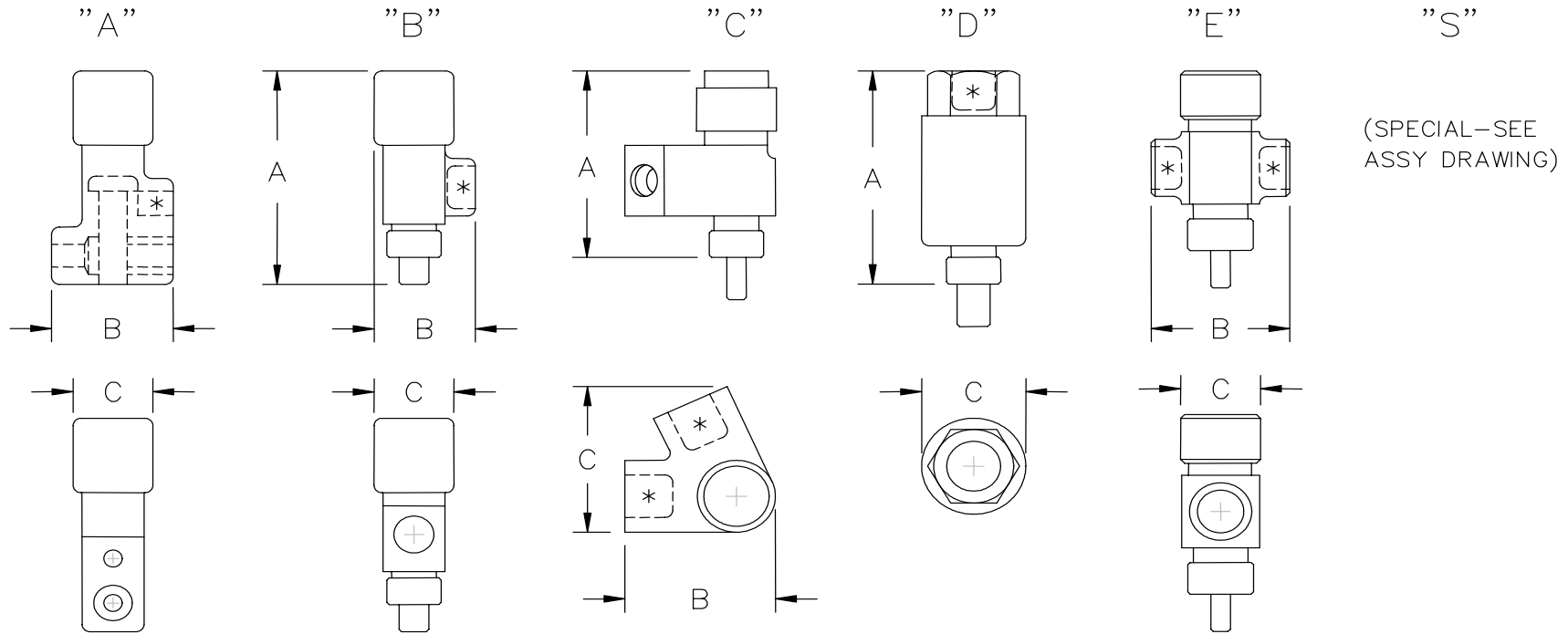


24225 GARNIER STREET • TORRANCE • CALIFORNIA 90505-5355 • U.S.A.
TELEPHONES: (310) 784-2100 • (800) 733-0321 • FAX: (310) 326-0797
E-mail: info@hstc.com

Issue Date: 1-3-01
Revision: NC
Page 1 of 3

PRODUCT LINE SUMMARY PIN PULLERS (SP SERIES)

CONFIGURATION TYPES



SEE TABULATION TABLES





24225 GARNIER STREET • TORRANCE • CALIFORNIA 90505-5355 • U.S.A.
 TELEPHONES: (310) 784-2100 • (800) 733-0321 • FAX: (310) 326-0797
 E-mail: info@hstc.com

Issue Date: 1-3-01
 Revision: NC
 Page 2 of 3

PRODUCT LINE SUMMARY PIN PULLERS (SP SERIES)

SP MODEL NO.	CONFIG. TYPE	ENVELOPE DIMENSIONS			PIN DIA.	MIN. EFFEC. PIN STROKE	MIN. OP. SHEAR LOAD LB.	MOUNTS					CARTRIDGE DETAILS		MATERIAL COMPOSITION	
		"A"	"B"	"C"				EXTERNAL THREAD		INTERNAL THREAD		OTHER	NO	PORT SIZE	PIN	CASE
								SIZE	DEPTH	SIZE	DEPTH					
1100-4	A	2.30	1.44	.75	1/4-28 INSERT	.52	2000 (DS)	-	-	1/4-28	.46	-	1	1/2-20	15-5	15-5
1100-6	A	2.75	1.72	1.06	3/8-24 INSERT	.67	2000 (DS)	-	-	3/8-24	.63	-	1	3/8-24	15-5	15-5
1100-8	A	3.16	2.00	1.09	1/2-20 INSERT	.84	6000 (DS)	-	-	1/2-20	.71	-	1	1/2-20	15-5	15-5
1102	B	1.91	1.15	.75	.308	.38	2000 (DS)	1/2-20	.375	-	-	-	1	1/2-20	15-5	15-5
1105	D	2.63	-	.94	.248	.62	2000 (DS)	1/2-20	.544	-	-	-	1	1/2-20	15-5	15-5
1105B	D	2.63	-	.94	.248	.62	1000	1/2-20	.544	-	-	-	1	1/2-20	INC. 718	INC. 718
1106	D	2.08	-	.94	.124	.34	2000			-	-	-	1	1/2-20	15-5	15-5
1107	D	4.00	-	1.25	.435	2.00	7500 (DS)	3/4-16	.750	-	-	-	1	1/2-20	15-5	15-5
1115	S	3.06	3.09	2.09	.498	.50	750 (DS)	-	-	-	-	(flange)	1	1/2-20	INC. 718	MONEL 400
1117	D	1.94	1.28	1.00	.373	.50	2000 (DS)	5/8-24	.375	-	-	-	1	1/2-20	15-5	15-5
1118	S	2.50	1.50	1.44	.249	.50		-	-	-	-	(flange)	1	3/8-24	15-5	15-5
1119	S	2.46	1.77	.95	.248	.50	1012	1/2-20	.500	-	-	-	1	3/8-24	15-5	15-5
1120	B	1.91	1.26	1.00	.185	.18	1125	9/16-18	.575	-	-	-	1	1/2-20	15-5	7075-17





24225 GARNIER STREET • TORRANCE • CALIFORNIA 90505-5355 • U.S.A.
 TELEPHONES: (310) 784-2100 • (800) 733-0321 • FAX: (310) 326-0797
 E-mail: info@hstc.com

Issue Date: 1-3-01
 Revision: NC
 Page 3 of 3

PRODUCT LINE SUMMARY PIN PULLERS (SP SERIES)

SP MODEL NO.	CONFIG TYPE	ENVELOPE DIMENSIONS			PIN DIA.	MIN. EFFEC. PIN STROKE	MIN. OP. SHEAR LOAD LB.	MOUNTS					CARTRIDG DETAILS		MATERIAL COMPOSITION	
		"A"	"B"	"C"				EXTERNAL THREAD		INTERNAL THREAD		OTHER	NO	PORT SIZE	PIN	CASE
								SIZE	DEPTH	SIZE	DEPTH					
1201	E	2.37	1.53	1.00	.250	.50	2000 (DS)	7/8-16	.500	-	-	-	2	1/2-20	15-5	15-5
1201A	E	2.37	1.53	1.00	.250	.50	1200 (DS)	7/8-16	.500	-	-	-	2	1/2-20	15-5	15-5
1206	C	2.23	1.51	1.79	.189	.56	200 (DS)	-	-	-	-	(flange)	1-0 1-C	3/8-24	INC. 718	2024-T3
1206B, C, D	C	1.87	1.35	1.35	.189	.60	200 (DS)	1/2-20	.460	-	-	-	2	3/8-24	INC. 718	2024-T3
1209	S	5.30	3.79	2.19	.748	2.10		-	-	-	-	(flange)	2	9/16-18	15-5	7075-T6
1210	D	5.07	3.36	2.38	.874	1.53	4000 (DS)	-	-	-	-	(flange)	2	9/16-18	15-5	7075-T6

- NOTES:
- | | | | |
|----|--|----|--|
| 1) | All dimensions given in inches | 3) | Asterisk indicates cartridge outline |
| 2) | All units contain a shear pin to lock operating pin in place | 4) | DS - indicates double shear where listed |

